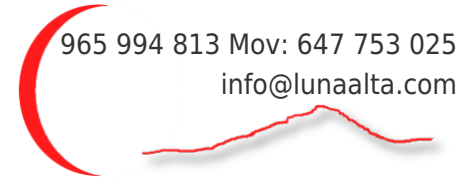


# Penthouse Edge of village Jesus Pobre

€149,000 £130,584;\*



Ref: LA976DA



Far reaching  
Private garage  
Central heating



El Patio Jesus Pobre. Beautifully presented. South facing. First floor (top floor) apartment. 2 double bedrooms living/dining covered terrace bathroom kitchen/utility. Underground parking. Secure complex. Gardens & pool.

Top floor (first floor) apartment with country views. Central community gardens & pool. Two double bedrooms, bathroom, living/dining room, kitchen, terrace. Beautifully decorated. Immaculate throughout, south facing, ac/ch.

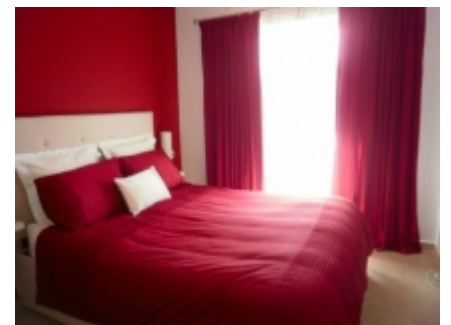
2 bedrooms, living/dining room, patio doors to covered terrace, bathroom. Central community gardens & pool. Underground parking. A lovely property walking distance to all amenities. Secure small complex.



Pool!



Living/dining room



Master bedroom



Terraces



Bathroom



Guest bedroom

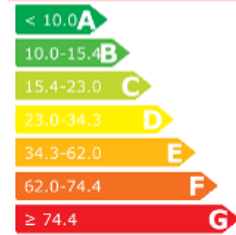


View to pool from naya!



Kitchen

**CALIFICACIÓN ENERGÉTICA  
GLOBAL EMISIONES DE  
DÍOXIDO DE CARBONO  
[kgCO<sub>2</sub>/m<sup>2</sup> año]**



Energy certificate in process.